

SxS Software Updater Version 1.3.0

1. Introduction

The SxS Software Updater updates the software of your SxS-1 memory card.

1.1 Operating Environment

Supported Operating Systems

Windows 7

Windows 8

Windows 8.1

Windows 10

CPU

1 GHz or higher

RAM

1 GB or more

Hard Drive

10 MB or more

Supported Drives

Express card slot (the latest SxS Device Driver must be installed)

SBAC-US10 ※

SBAC-US20 ※

SBAC-US30 ※

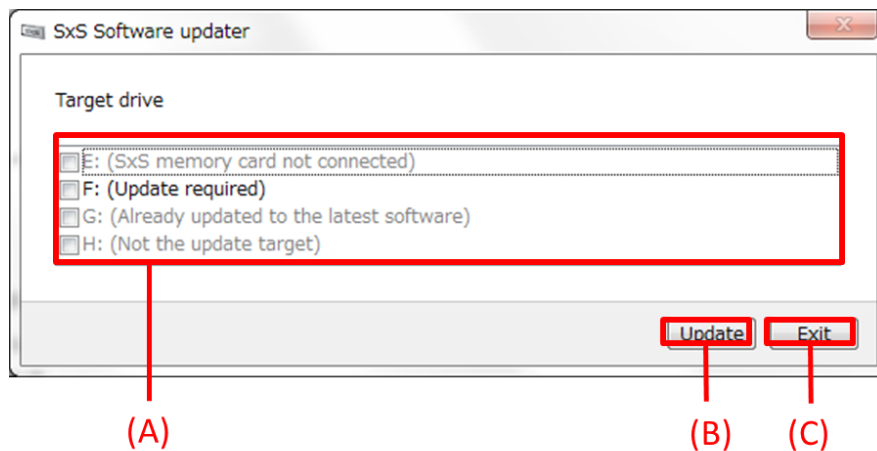
※ The firmware must be the latest version in order to use the SxS Software Updater.

Note

The SxS Software Updater does not operate in the following environments:

- Homemade computer
- Mac
- Virtual environment
- Multi-boot environment

1.2 User Interface



(A)

This is an area where you select SxS-1 memory card whose software needs to be updated. If you select checkboxes in this window, the software of SxS-1 memory card connected to those selected drives will be updated.

This area shows a list of the drive letters of SxS-compliant reader/writer devices and their statuses:

“Update required”

The software of your SxS-1 memory card needs to be updated.

“Already updated to the latest Software”

The software of your SxS-1 memory card has already been updated.

“Not the update target”

Your SxS memory card does not contain the update target software.

“SxS memory card not connected”

No SxS memory card is connected to this drive.

“Drive firmware update required”

The firmware of this drive must be first updated.

(B)

Click this button to start the update process for the software of SxS-1 memory card in the selected drives.

If the firmware of a selected drive needs to be updated, the update process for that firmware will be first performed. After it is finished, you can update the software of your cards.

(C)

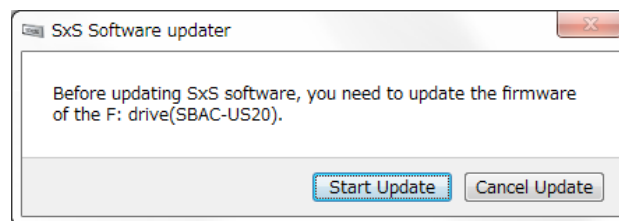
Click this button to exit the SxS Software Updater.

2. SxS Software Update Procedure

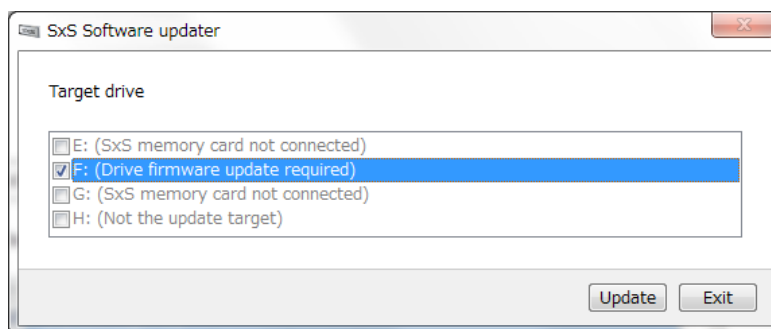
2.1 Preparation

Before updating the SxS software, make sure the firmware of your SxS memory card reader/writer is updated to the latest version. Take the following steps.

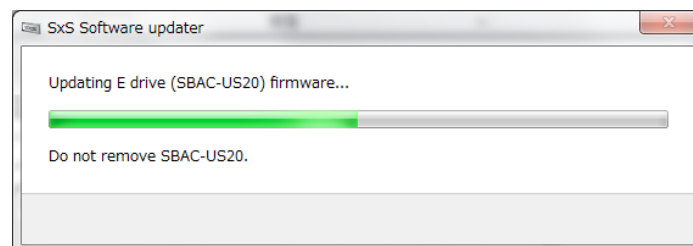
1. Start the SxS Software Updater, or connect a drive after you start the SxS Software Updater. If the following dialog appears, that means the firmware of your reader/writer should be updated.



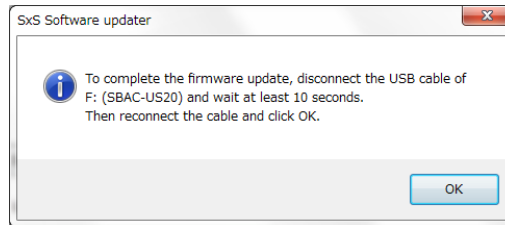
2. Click the Start Update button to update the firmware.
Even if you select Cancel Update, you can go back to the main window and select the drive to update its firmware.



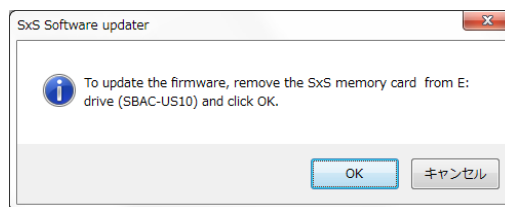
3. When the firmware update starts, the progress bar is displayed.



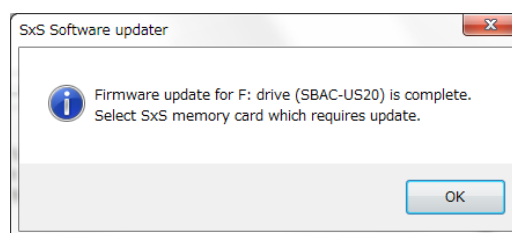
4. If the following dialog appears, disconnect the USB cable and wait at least 10 seconds. Then, reconnect the cable.



If the following dialog appears, remove the SxS memory card from the SBAC-US10 and click OK.



5. When the firmware update is complete, the following dialog appears. Click OK to close this window and return to the main window for proceeding to update the software of your SxS memory cards.



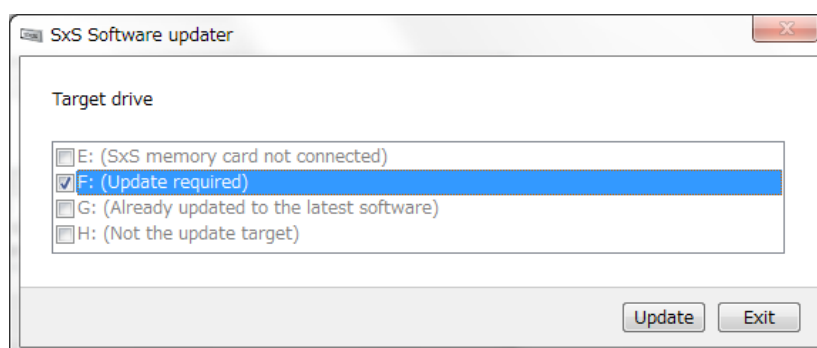
Note: When you connect multiple SxS memory card reader/writer devices, repeat this procedure as many times as the number of those devices.

2.2 Updating the SxS Memory Card Software

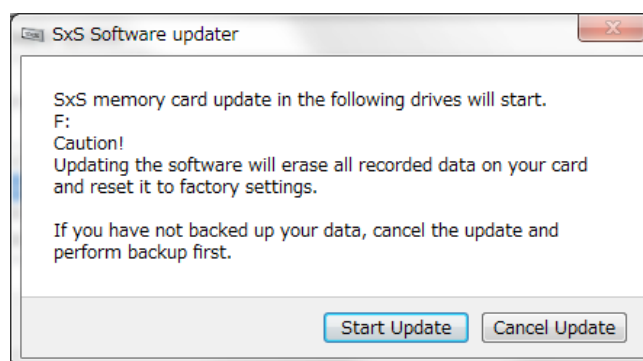
To update the software of your SxS-1 memory card, take the following steps:

1. Connect your SxS-1 memory card.
2. In the main window, select the checkboxes for the drives for which “Update required” is displayed, and click Update.

Note: You can select multiple drives at a time.



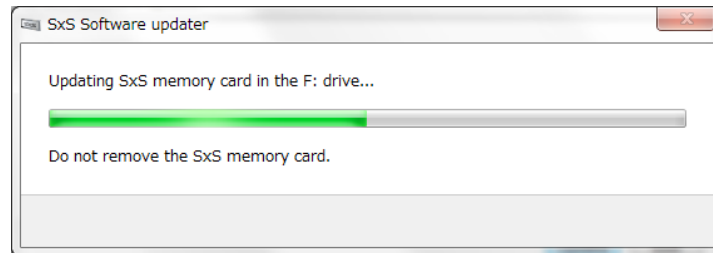
3. The following dialog appears to confirm whether to start update.
If you want to update, click the Start Update button.
If you want to perform data backup or other operations, click the Cancel Update button to return to the main window and exit the SxS Software Updater.



4. When the software update starts, the progress bar is displayed.

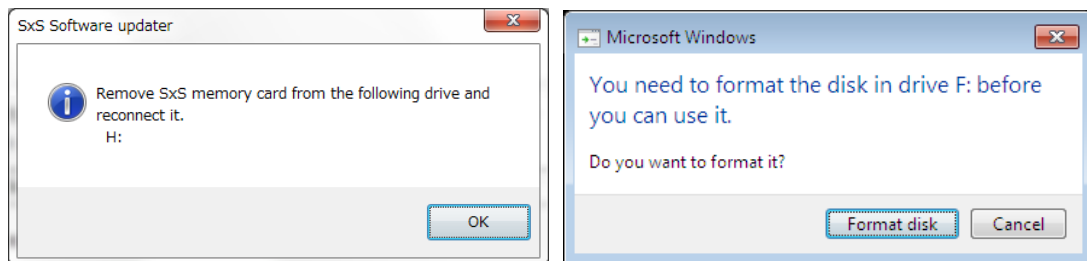
If you have selected multiple SxS memory cards, the SxS Software Updater displays as many windows as the selected memory cards to show their progresses.

Note: The update takes about 1 minute per SxS-1 memory card.

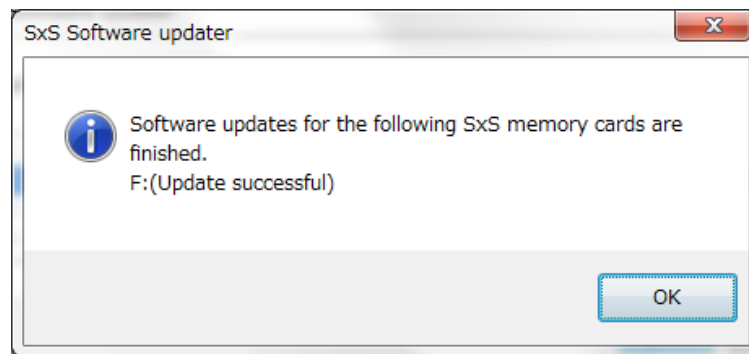


5. If the software of the SxS memory card connected to the Express card slot should be updated, the following dialog appears. Remove the memory card from the slot and reconnect it. At this point, if Microsoft Windows displays a dialog prompting you to format the disk, just click the Cancel button to close that window.

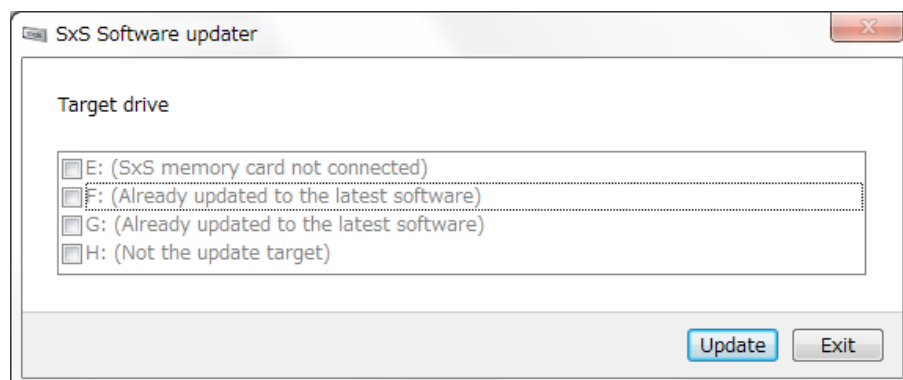
Note: This updater message may appear twice. If it appears again, repeat Step 5 again.



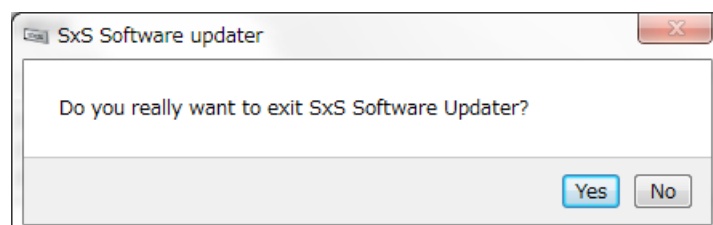
6. When the following window appears, the update process is complete. Click OK to close the window.



7. When the main window appears, you can see the drive status has been changed to "Already updated to the latest software".



8. To exit the SxS Software Updater, click Exit. The following dialog further appears. Click Yes to exit the SxS Software Updater. If you select No, you can go back to the main window.



3. Trouble Shooting

My SxS memory card is not recognized.

I remove and then insert my SxS memory card to the reader/writer, but the SxS Software Updater won't update the target drive list.

Take the following steps:

1. Remove your memory card.
2. Disconnect the USB cable of your SxS memory card reader/writer from your PC and then reconnect it.
3. Connect your SxS memory card to the reader/writer again.
4. If your memory card is still not recognized, check whether it is recognized in Windows Explorer.
5. If your memory card is recognized in Windows Explorer, exit the SxS Software Updater and restart it. If your memory card is not recognized in Windows Explorer, restart your PC.

My SxS memory card reader/writer is not recognized.

The SxS Software Updater won't respond after updating the firmware of my SxS memory card reader/writer.

Disconnect the USB cable from your PC and then reconnect it.

(In the case of SBAC-US10, disconnect and reconnect the power cable, as well.)

If your reader/writer is still not recognized, exit the SxS Software Updater and restart it.

Please use the USB cable included with your SxS memory card reader/writer.

I cannot update the firmware of my SxS memory card reader/writer.

Disconnect the USB cable from your PC, wait for about 10 seconds, and then reconnect it.

If the firmware update cannot still be confirmed, perform the firmware update again from the beginning.